

Supplementary material to: García-Vello P, Smith E, Elias V, Florez Pinzon C, Reveiz L. Adherence to clinical trial registration in countries of Latin America and the Caribbean, 2015. Rev Panam Salud Publica. 2018;42:e44.
<https://doi.org/10.26633/RPSP.2018.44>

This material was part of the original submission and was sent to peer-review. It is posted as provided by the authors.

Annex 1. Supplementary information

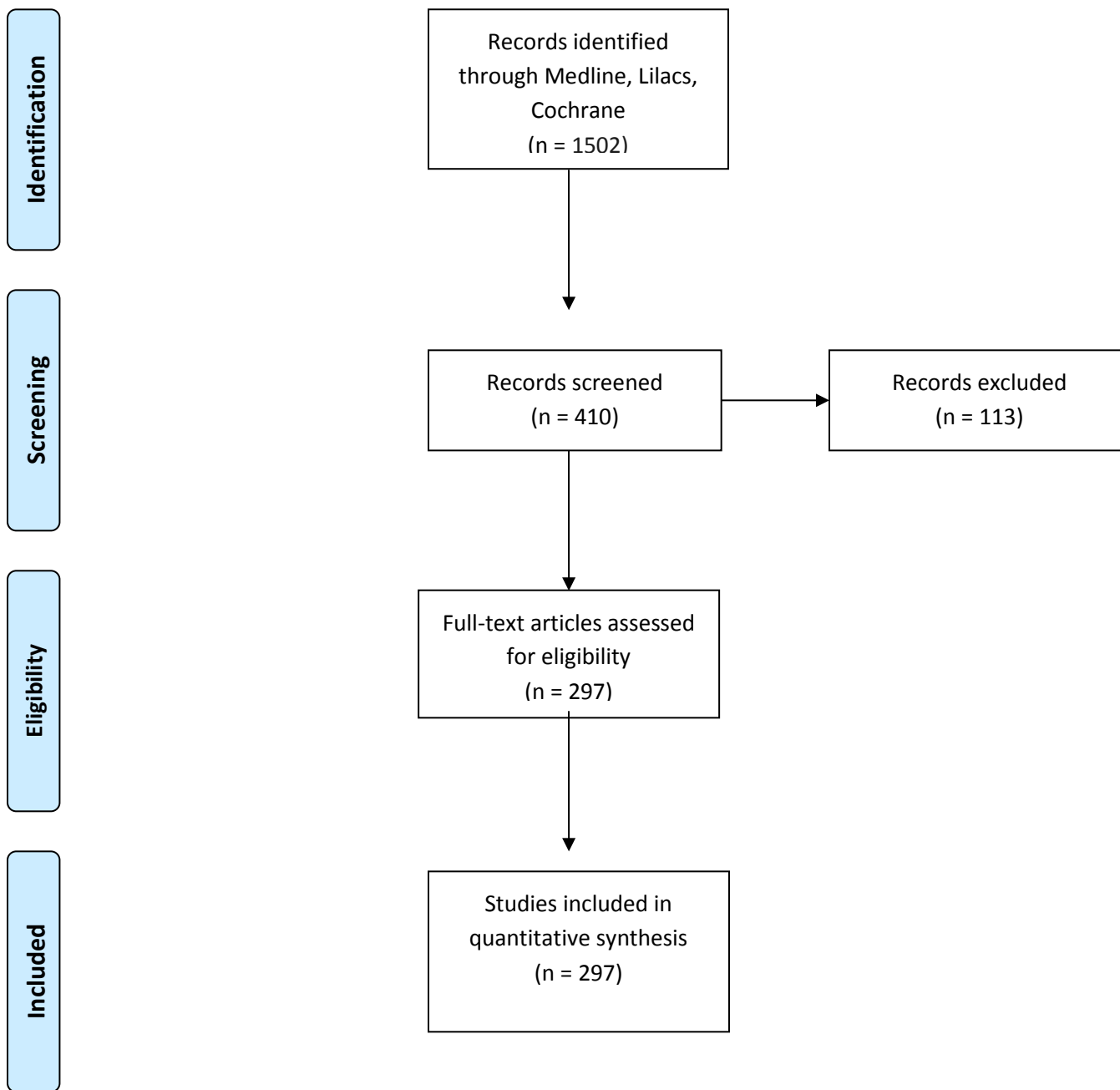
S1. Search strategy

The structured search filter included the following terms:

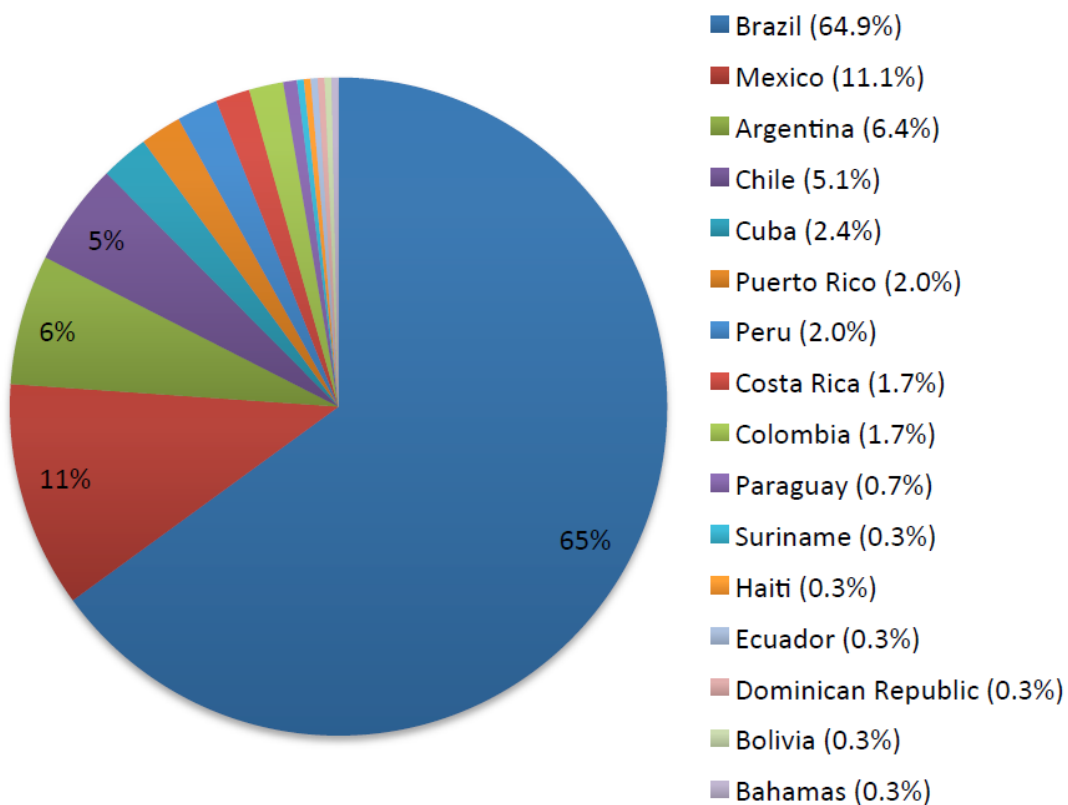
("Randomized controlled trial" [PT] OR "controlled clinical trial" [PT] OR "randomized controlled trials" [MeSH] OR "random allocation" [MeSH] OR "double-blind method" [MeSH] OR "single-blind method" [MeSH] OR "clinical trial" [PT] OR "clinical trials" [MeSH] OR "clinical trial" [TW] OR "randomized trial" [TW] OR "randomised trial" [TW]) AND (Latin America* [ad] OR South America* [ad] OR central America* [ad] OR Caribbean* [ad] OR Anguilla [ad] OR Antigua and Barbuda [ad] OR Argentina [ad] OR Aruba [ad] OR Bahamas [ad] OR Barbados [ad] OR Belize [ad] OR Bermuda [ad] OR Bolivia* [ad] OR Brazil* [ad] OR Brasil* [ad] OR British Virgin Islands [ad] OR Cayman Islands [ad] OR Chile* [ad] OR Colombia* [ad] OR Costa Rica [ad] OR Cuba [ad] OR Dominica [ad] OR Dominican Republic [ad] OR El Salvador [ad] OR Ecuador [ad] OR French Guiana [ad] OR Grenada [ad] OR Guadalupe [ad] OR Guatemala [ad] OR Guyana [ad] OR Haiti [ad] OR Honduras [ad] OR Jamaica* [ad] OR Martinique [ad] OR Mexico [ad] OR Montserrat [ad] OR Netherlands Antilles [ad] OR Nicaragua [ad] OR Panama [ad] OR Paraguay [ad] OR Peru [ad] OR Puerto Rico [ad] OR Saint Kitts and Nevis [ad] OR Saint Lucia [ad] OR Saint Vincent and the Grenadines [ad] OR Suriname [ad] OR Trinidad and Tobago [ad] OR Uruguay* [ad] OR Venezuela [ad])

The strategy focused on humans studies and was not limited by language or type of intervention. Studies were collected in March 2015 on Medline, LILACS and the Cochrane Databases.

S2. PRISMA 2009 Flow Diagram



S3. Distribution of first author country affiliation



S4. Characteristics of registered studies (n=178), according to prospective or retrospective registration^a.

Characteristic	Prospective Registration	Retrospective Registration	P*
Affiliation in a country with Primary Registry in the WHO Registry Network			0.614
Yes ^c	52 (60.5)	59 (64.1)	
No	34 (39.5)	33 (35.9)	
Multinational			<0.001
Yes	51 (59.3)	16 (17.4)	
No	35 (40.7)	76 (82.6)	
Unclear	0 (0)	0 (0)	
Multicenter			<0.001
Yes	63 (73.3)	27 (29.3)	
No	15 (17.4)	40 (43.5)	
Unclear ⁺	8 (9.3)	25 (27.2)	
Phase of Study			0.009
Early (Phase 1-2)	17 (19.8)	17 (18.5)	
Late (Phase 3-4)	47 (54.7)	32 (34.8)	
Unclear ⁺	22 (25.6)	43 (46.7)	
Randomization			0.038
Yes	79 (91.9)	85 (92.4)	
No	5 (5.8)	7 (7.6)	
Unclear ⁺	2 (2.3)	0 (0)	
Blinding			0.038
Yes	51 (59.3)	64 (69.6)	
No	33 (38.4)	25 (27.2)	
Unclear ⁺	2 (2.3)	3 (3.3)	
Clinical trials related to Alternative Therapies ^d			<0.001
Yes	4 (4.7)	17 (18.5)	
No	82 (95.3)	75 (81.5)	
Study of a Neglected Disease			0.212
Yes	5 (5.8)	2 (2.2)	
No	81 (94.2)	90 (97.8)	
Funding Source			0.003
Private	51 (59.3)	33 (35.9)	
Public	25 (29.1)	51 (55.4)	
Self	1 (1.2)	0 (0.0)	
Unclear ⁺	9 (10.5)	8 (8.7)	
Recruitment of vulnerable participants			0.123
Yes	21 (24.4)	14 (15.2)	
Not reported	65 (75.6)	78 (84.8)	
Ethical Approval			0.760
Yes	58 (67.4)	64 (69.6)	
Not reported	28 (32.6)	28 (30.4)	
Informed Consent			0.317
Yes	69 (80.2)	68 (73.9)	
Not reported	17 (19.8)	24 (26.1)	

Approval + Consent			0.783
Yes	55 (64.0)	57 (62.0)	
Not reported	31 (36.0)	35 (38.0)	
Follow up duration			<0.001
Less than 1 Year	53 (61.6)	69 (75.0)	
Between 1 and 2 years	17 (19.8)	6 (6.5)	
More than 2 years	16 (18.6)	17 (18.5)	

^a Table values are n (column %) for categorical variables.

^b Numbers may not sum to total due to missing data, and percentages may not sum to 100% due to rounding.

^c Only Brazil and Cuba had Primary Registry in the WHO Registry Network in 2015.

^d Alternative therapies were classified using Merriam-Webster's definition.

*P-value for the chi-squared or Pearson's exact test

+This level of the categorical variable was not included in the calculations for P value, even though the relative percentages are presented in this table