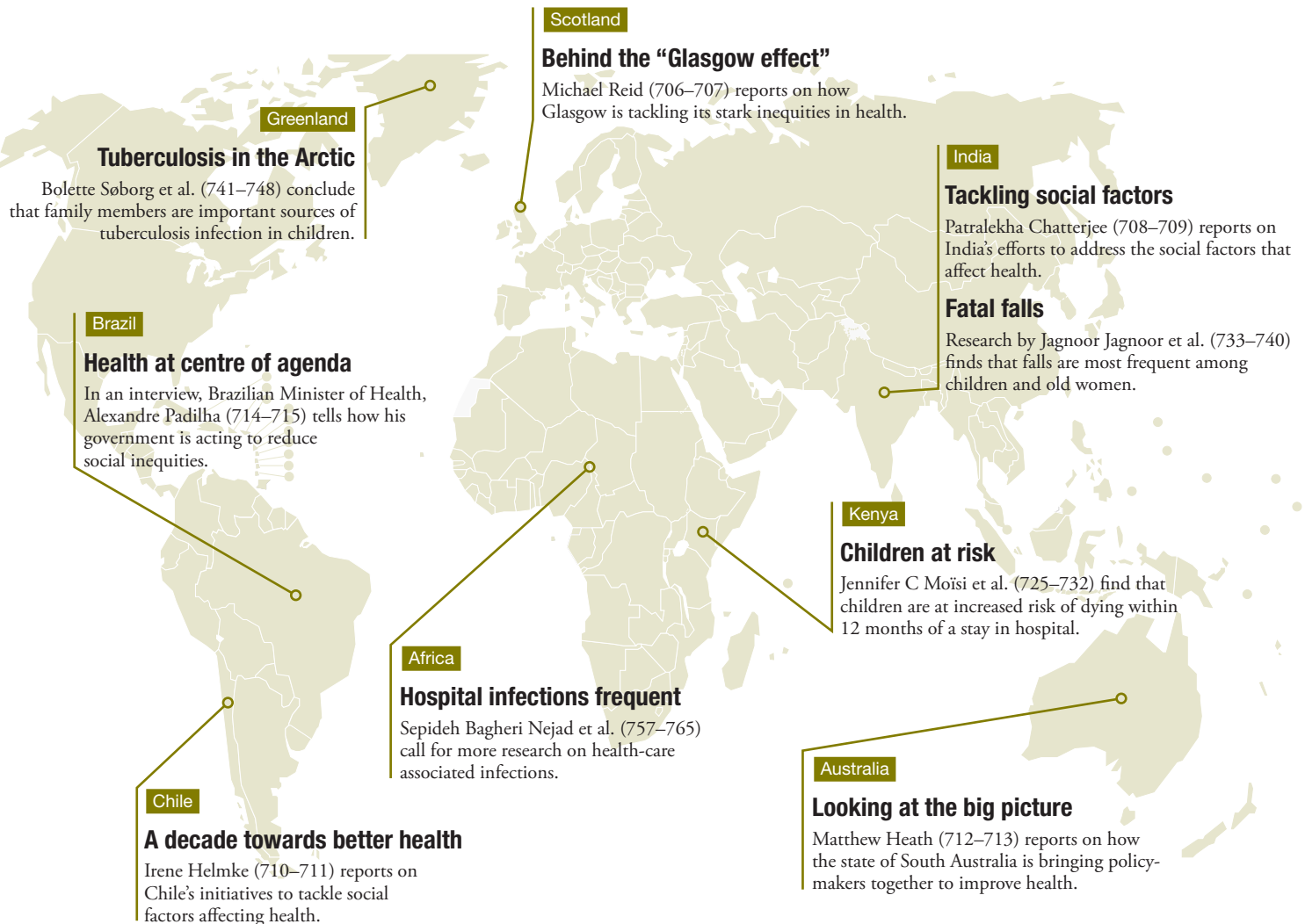


This month's issue of the *Bulletin* has a special focus on the social determinants of health to coincide with the international conference on this topic in Rio de Janeiro, Brazil, from 19–21 October. Two editorials, a perspective, an interview and four news features are devoted to this subject. The editorials reflect the views of Michael Marmot (702), who chaired the WHO Commission on Social Determinants of Health in 2005, and of Rüdiger Krech (703), the director of the Department of Ethics, Equity, Trade and Human Rights at WHO. Krech also joins his colleague Kumanan Rasanathan (775–776) in a perspective that calls for more action on social factors to combat noncommunicable diseases.



Global trends in mesothelioma

Vanya Delgermaa et al. (716–724) take a close look at mesothelioma mortality figures from 1994–2008.

Japanese encephalitis

Grant L Campbell et al. (766–774) estimate the global incidence of Japanese encephalitis to guide prevention and control.

Blindness and cataract surgery

Shaheen P Shah et al. (749–756) find a strong link between poverty and the severity of visual loss.