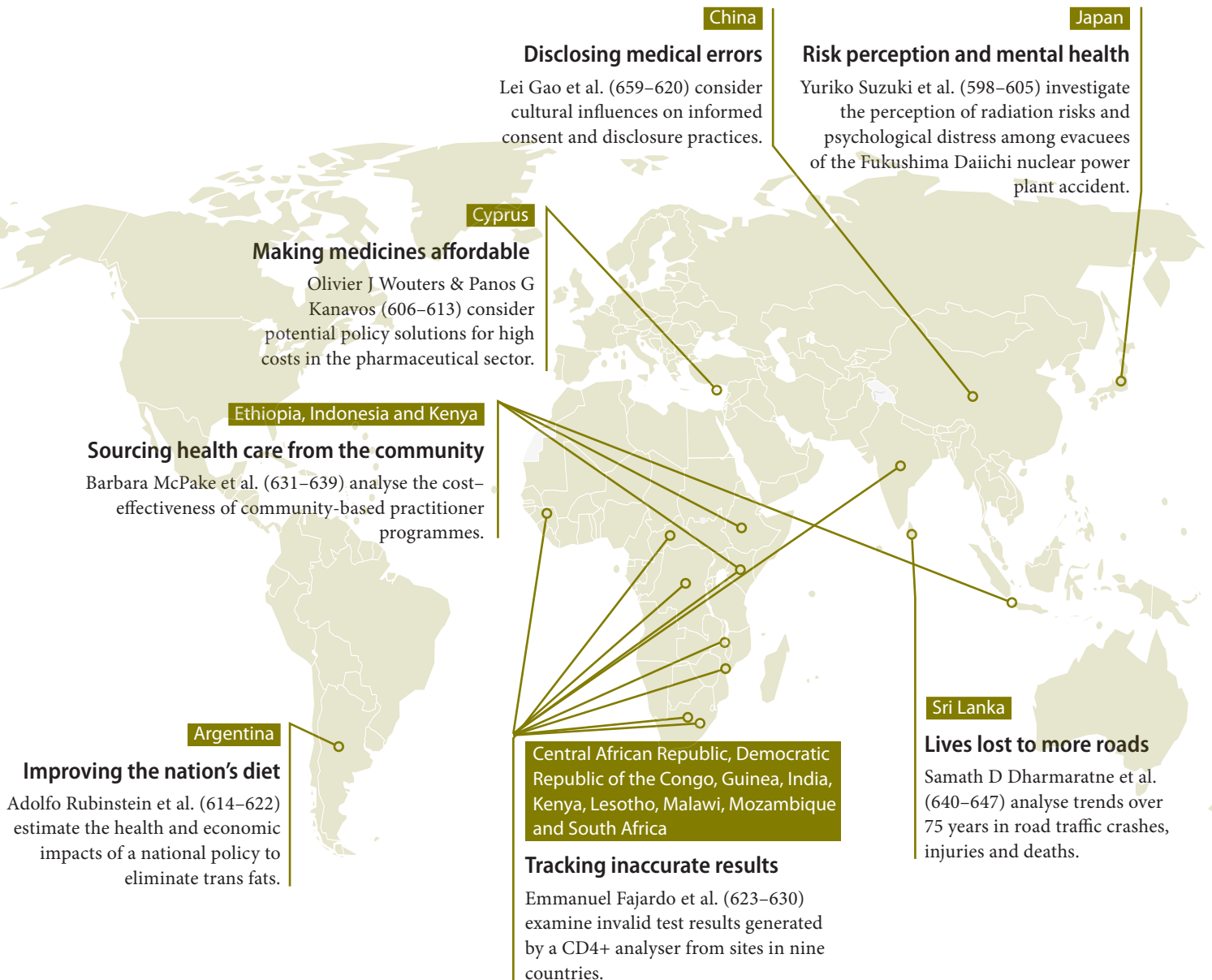


In the editorial section, Ahmad Reza Hosseinpoor et al. (591) stress the importance of monitoring health inequality in the post-2015 agenda. James Campbell et al. (590) put the cost-effectiveness study done by Barbara McPake et al. (631–639) into the global context of using community-based practitioners to expand access to health care.

In the news section, Apiradee Treerutkuarkul and Karl Gruber report on efforts to improve oral health in low- and middle-income countries. (594–595). Sheila Tlou tells Fiona Fleck how HIV prevention campaigns have evolved in Botswana since the 1980s. (596–597).



Collecting data in emergency settings

Thidar Pyone et al. (648–658) review the tools available for rapid assessments of maternal and child health.

Universal health coverage

Joseph Wong (663–664) discusses strategies for achieving universal health coverage.

Understanding complex problems

David Bishai et al. (661–662) explain why communities affected by a public health problem should describe and address it.